

## **Glasgow Film Theatre - Visual Story**

**We hope this Visual Story will help you prepare for your visit to GFT and familiarise you with the venue\*.**

\*Local health and safety restrictions, enforced by the government, may alter aspects of this story. Please contact us ahead of your visit if you wish to check.

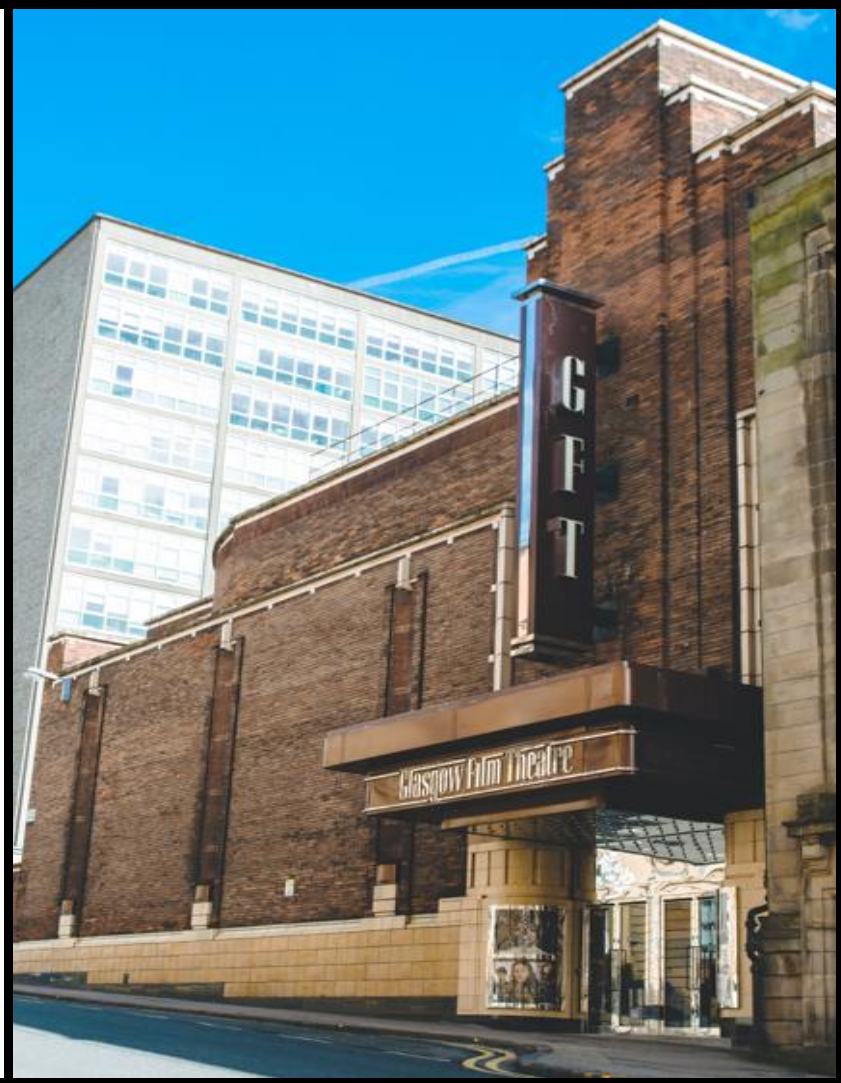
### **For any enquiries:**

- **call box office on 0141 332 6535;**
- **email Community Engagement Co-ordinator, Nicola Scott**  
**[nicola.scott@glasgowfilm.org](mailto:nicola.scott@glasgowfilm.org);**
- **You can speak to a member of the Front of House staff on the day**

**This document contains 13 pages using Arial 18pt font.**

**Welcome to Glasgow Film Theatre  
(GFT).**

**A three-screen,  
not-for-profit,  
independent cinema on  
12 Rose Street, Glasgow.**



**GFT, together with  
The National Autistic Society Scotland,  
provides Access Film Club,  
a monthly film screening and post-film chat in a  
friendly, social and welcoming environment.**



**Please enter the GFT via the main automatic  
glass doors on Rose Street.**

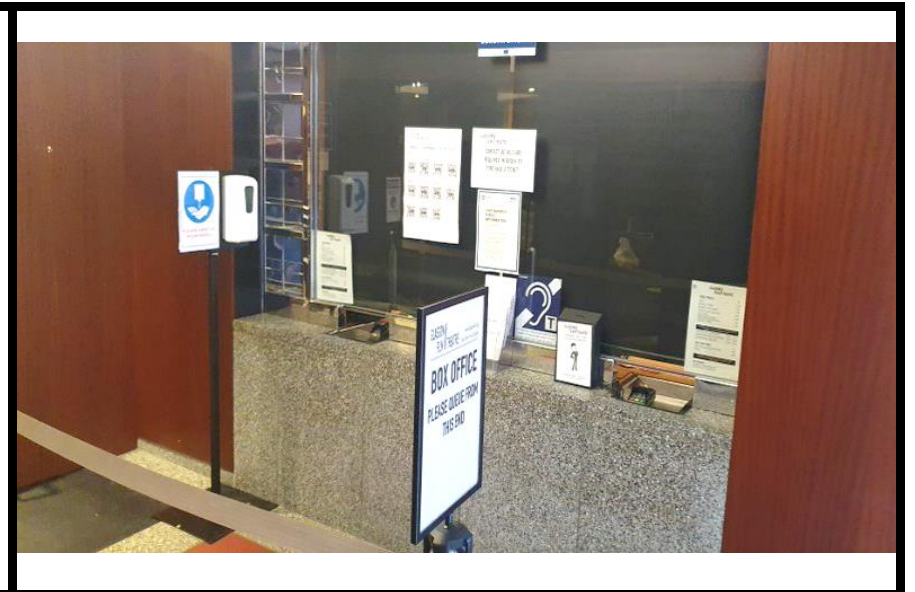


## Entrance of the Glasgow Film Theatre

There is electronic assistance button on the left-hand side of the front entrance.



When you are standing facing the GFT front entrance, please enter the box office queue from the right-hand side of the front doors.



**Once inside the GFT, if you can,  
we encourage you to wear a face covering in the  
cinema as a precautionary measure.**





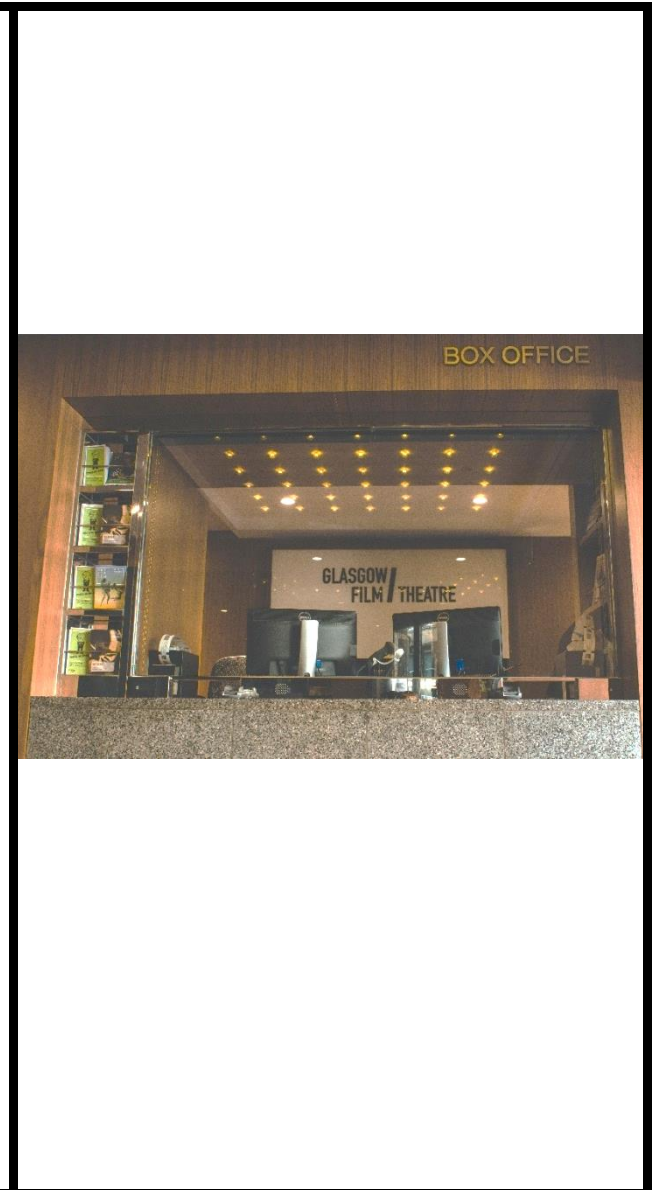
## Purchasing Tickets

We encourage people to pre-book their tickets online:

<https://glasgowfilm.org/> but you can also collect or buy your tickets from Box Office.

Distancing restrictions ended in Scotland on 9 August 2021, however we have capped the tickets available for selected screenings to help customers become used to this.

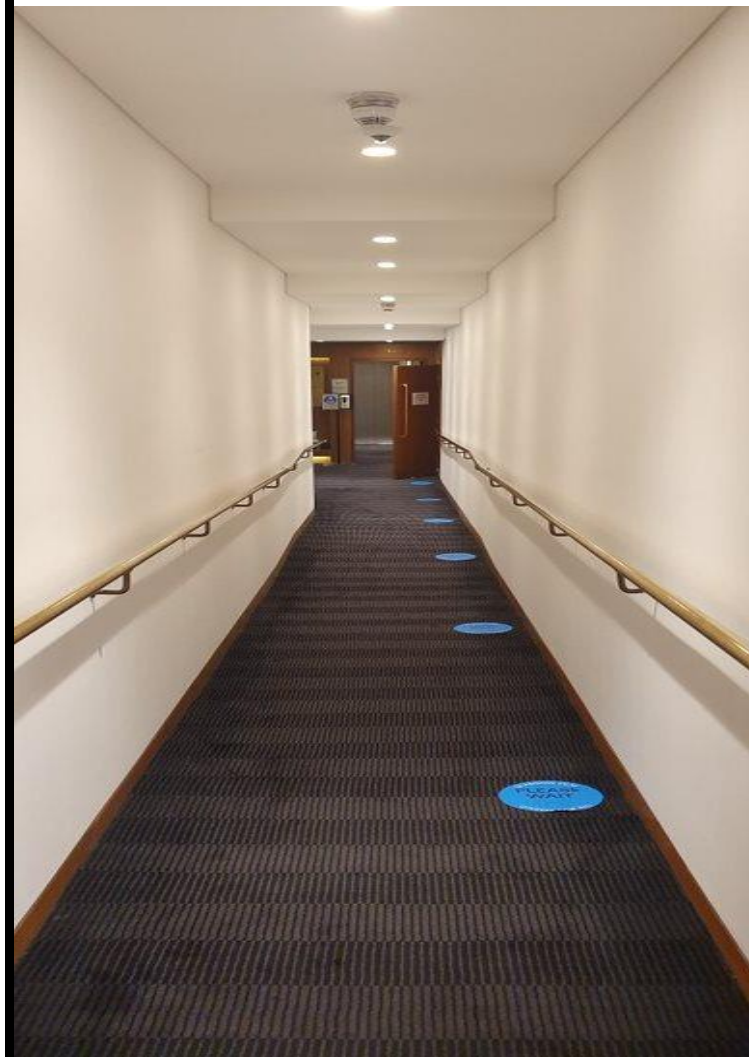
- All Monday to Thursday shows before 5pm have capacity capped at 50% (unless otherwise stated).
- All other screenings have full unlimited seating capacity (unless otherwise stated). This is a temporary measure and we ask that all customers are considerate to their fellow audience members when choosing where to sit.



**Neurodiverse-friendly events usually take place in Cinema 3. Sometimes these events are titled 'Access Film Club'.**

**There are no adverts or trailers shown for so make sure you arrive for the event start time.**

**To the left of the main foyer, Cinema 3 is at the end of the corridor on the left-hand side.**



## Toilet Access

From the left of the foyer: male, female and one gender-neutral / accessible toilet are on your left.

A second set of toilets are at the top of the foyer, up a small set of stairs and on the right for male, female toilets and one gender-neutral accessible toilet.





## Toilet Access

If you are going to the second set of toilets, there are stickers on the floor reminding you to keep walking on the left as you walk up the stairs, turn right and walk along the corridor.



## Toilet Access

This is what the two accessible and gender-neutral toilet doors look like.

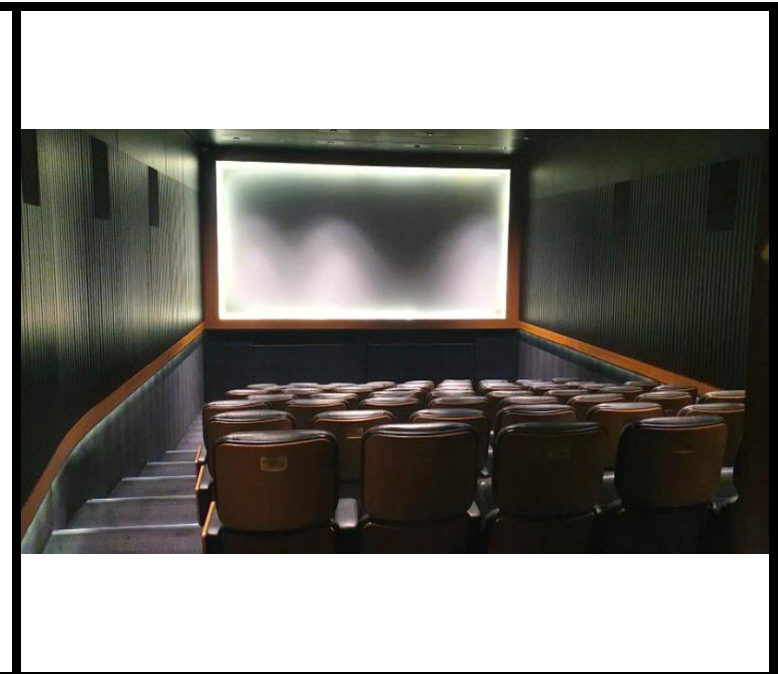


**There are numerous stations to sanitise your hands throughout the venue.**



**You will be greeted by an usher at the door into Cinema 3.**

**The usher will ask you to hand them your ticket. They will tear off part of your ticket at the perforated line so we know how many people are at the event.**



**If there is allocated seating, your ticket will show which seat you need to sit in. For example, 'B6'. An usher will help you find your allocated seat.**

**Please sit in the seat you have been allocated. You can leave the cinema seat to go to the toilet or to take a break and always return to the same seat.**

**If not allocated seating, sit where you like but if you need to leave your seat, always return to the seat you have chosen.**

### **Cinema 3**



**When you leave the event, please help us keep the cinemas clean by putting your rubbish in either:**

**Yellow**- general waste; or

**Blue** – recyclable material.

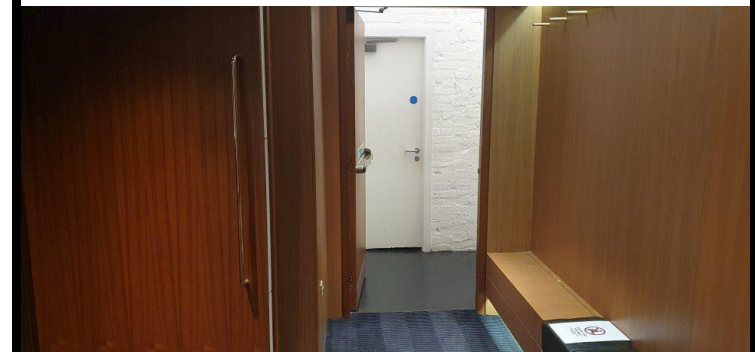


**At the end of the event**

**Depending on how busy the cinema is on the night, when the event ends, you may be asked to leave via the front entrance.**

**Or you may be asked by to leave through the side-exit. To leave from this exit and turn left when you exit Cinema 3.**

**A picture of what the side-exit looks like.**





Go through the side- exit door and up the stairs pictured here to the fire exit doors.

Once outside the fire exit doors:  
turn left for the GFT entrance  
on Rose Street;  
or right towards Cambridge Street.

A picture of the side-exit taking you out of the GFT



Thank you for reading and we hope you  
enjoy your experience at GFT!