

## **Glasgow Film Theatre - Visual Story**

**We hope this Visual Story will help you prepare for your visit to GFT and familiarise you with the venue.**

**For any enquiries:**

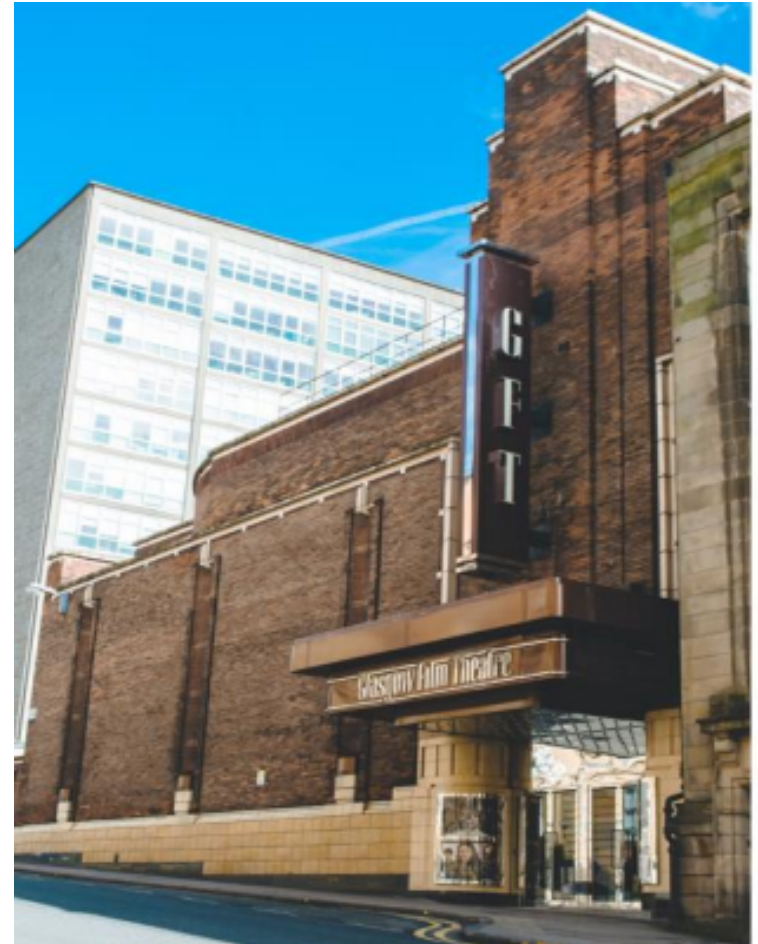
- call box office on 0141 332 6535**
- email Community Engagement Coordinator, Nicola Scott [nicola.scott@glasgowfilm.org](mailto:nicola.scott@glasgowfilm.org);**
- You can speak to a member of the Front of House staff on the day**

**This document contains 11 pages using Arial 18pt font.**

**Welcome to Glasgow Film Theatre (GFT).**

**A three-screen, not-for-profit,  
independent cinema and educational  
charity on 12 Rose Street, Glasgow, G3 6RB**

**GFT, together with  
The National Autistic Society Scotland,  
provides Access Film Club,  
a monthly Autism, learning disabled and  
friendly film screening and post-film  
chat in a friendly, social and welcoming  
environment.**



## **Entrance of the Glasgow Film Theatre**

**Please enter the GFT via the main automatic glass doors on Rose Street.**

**There are two sets of automatic double doors. The doors on the right-hand side will take you to the Box Office where you can purchase your ticket. Use this set of doors.**

**The doors to the left take you past the information screens with details of film screenings and times.**

**When you are standing facing the GFT front entrance, please enter the box office queue from the right-hand side of the front doors.**



## **Purchasing Tickets**

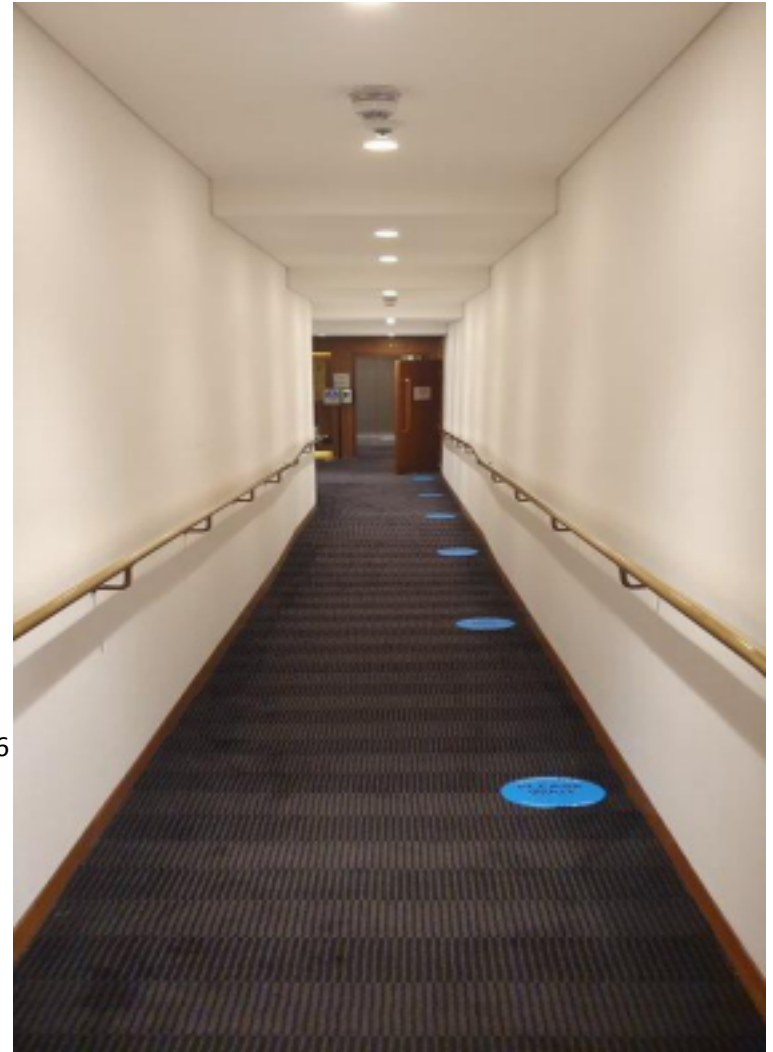
**We encourage people to pre-book their tickets online: [www.glasgowfilm.org](http://www.glasgowfilm.org) but you can also collect or buy your tickets from Box Office.**



**Access Film Club events usually take place in Cinema 3. There are no adverts or trailers shown for so make sure you arrive for the event start time.**

**To the left of the main foyer, Cinema 3 is at the end of the corridor on the left-hand side.**

6



## Toilet Access

**From the left of the foyer: male, female and one gender-neutral / accessible toilet are on your left.**

**A second set of toilets are at the top of the foyer, up a small set of stairs and on the right for male, female toilets and one gender-neutral accessible toilet.**

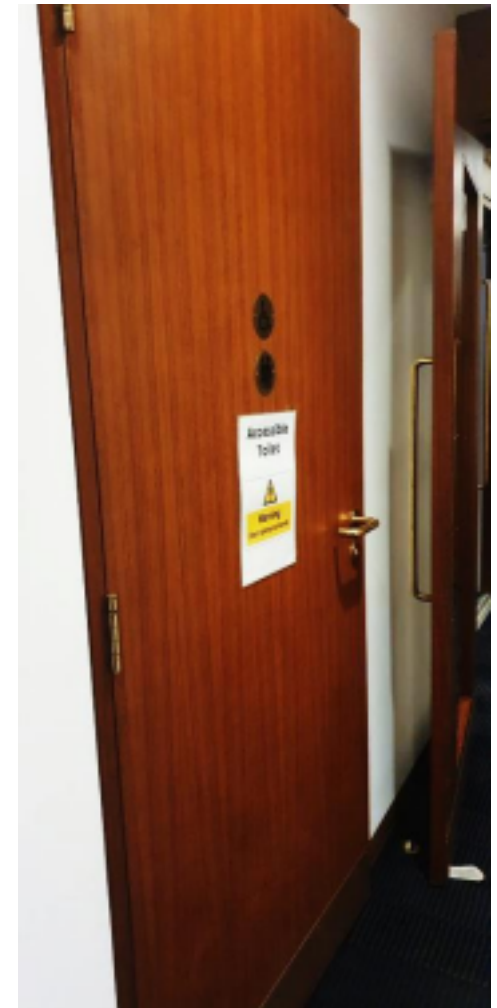




## Toilet Access

This is what the two accessible and gender-neutral toilet doors look like.

There are numerous stations to sanitise your hands throughout the venue.

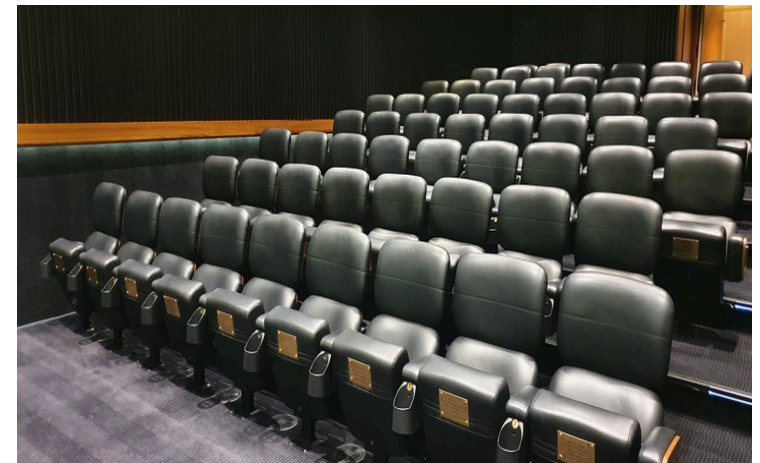


**You will be greeted by an usher at the door into Cinema 3 our 60-seat screen with wheel chair space (email [access@glasgwfilm.org](mailto:access@glasgwfilm.org) to for access requests including wheelchair space bookings).**



**This cinema has one aisle which has LED lighting strips at the edge of the stairs which are kept on during the film so you can get up and down easily.**

**The usher will ask you to hand them your ticket. They will tear off part of your ticket at the perforated line so we know how many people are at the event.**





## **At the end of the film screening**

**When the film ends there is a short discussion about the film you can take part in if you want to. If you don't that's ok, feel free to stay and listen or leave.**

**When you leave the event, please help us keep the cinemas clean by putting your rubbish in either:**

**Yellow**- general waste; or

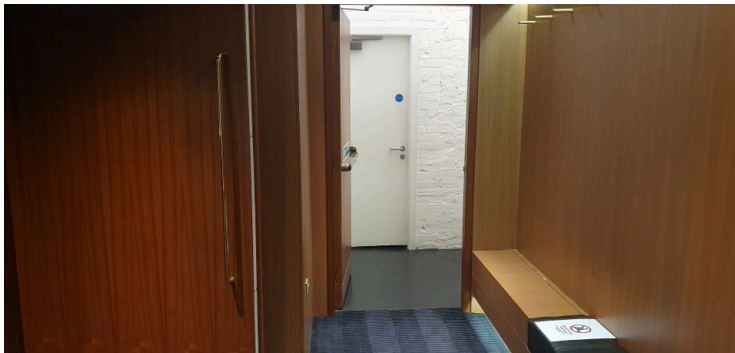
**Blue** – recyclable material.



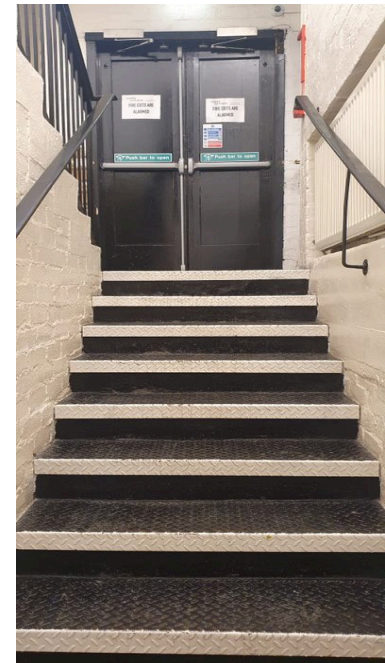
### **At the end of the film screening**

Depending on how busy the cinema is on the night, when the event ends, you may be asked to leave via the front entrance or you may be asked by the usher to leave through the side-exit. To leave from this exit and turn left when you exit Cinema 3.

Go through the side-exit door and up the stairs pictured here and to the fire exit doors. Once outside the fire exit doors, turn left for the GFT entrance on Rose Street or right to go towards Cambridge Street.



A picture of what the side-exit looks like.



Thank you for reading and we hope you enjoy your  
experience at GFT!

**GLASGOW**  
**FILM / THEATRE**

